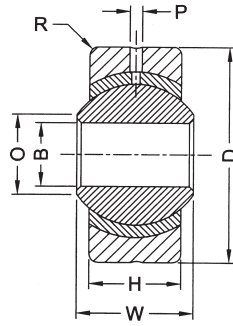


FBJ®

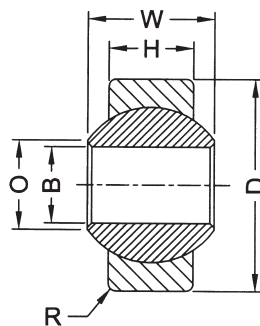
PB Series



Spherical Plain Bearings

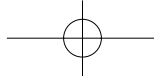
Model Number	Main Dimensions (mm)								Static load (kn)		Weight (g)
	B	W	O	H	D	P	R	Permit of Angel α	Radial	Axial	
PB 4	4	6	7.0	4.5	13	0.8	0.5	13	3	1	5
5	5	8	7.7	6	16	0.8	0.5	13	5.7	1.5	8.5
6	6	9	8.9	7	18	0.8	0.5	13	7	2	13
8	8	12	10.4	9	22	1.0	0.5	13	11.6	3.5	24
10	10	14	12.9	11	26	1.0	0.5	13	14.5	4	39
12	12	16	15.4	12	30	1.0	0.5	13	17	6.5	58
14	14	19	16.8	14	34	1.2	0.5	15	24	8.2	84
16	16	21	19.3	15	38	1.2	0.5	15	28.5	10	111
18	18	23	21.8	17	42	1.5	0.5	15	35	12.5	160
20	20	25	24.3	18	46	1.5	0.5	15	40	15	210
22	22	28	25.8	20	50	1.5	0.5	15	52	18	265
25	25	31	29.6	22	56	1.5	0.5	15	60	23	390

Rod End

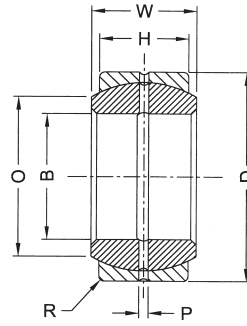


Model Number	Main Dimensions (mm)								Static load (kn)		Weight (g)
	B	W	O	H	D	P	R	Permit of Angel α	Radial	Axial	
PC 4	4	6	7.0	4.5	12	-	0.5	13	3	1	3.5
5	5	8	7.7	6	13	-	0.5	13	5.7	1.5	6
6	6	9	8.9	7	15	-	0.5	13	7	2	9
8	8	12	10.4	9	18	-	0.5	13	11.6	3.5	17
10	10	14	12.9	11	22	-	0.5	13	14.5	4	27
12	12	16	15.4	12	26	-	0.5	13	17	6.5	41
14	14	19	16.8	14	30	-	0.5	15	24	8.2	59
16	16	21	19.3	15	34	-	0.5	15	28.5	10	78
18	18	23	21.8	17	38	-	0.5	15	35	12.5	112
20	20	25	24.3	18	42	-	0.5	15	40	15	147
22	22	28	25.8	20	46	-	0.5	15	52	18	186
25	25	31	29.6	22	50	-	0.5	15	60	23	273

Rod End



GE Series



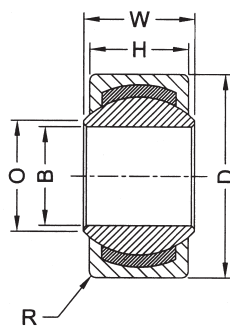
Spherical Plain Bearings

Model Number	Main Dimensions (mm)								Static load (kn)		Weight (g)
	B	W	O	H	D	P	R	Permit of Angel α	Radial	Axial	
GE 10	10	9	12	8	19	1.0	0.5	8	36	9	13
12	12	10	14	9	22	1.0	0.5	8	40	10	20
15	15	12	18	10	26	1.5	0.5	8	50	15	32
17	17	14	20	11	30	1.5	0.5	8	60	20	45
20	20	16	24	13	35	1.5	0.5	7	110	27	70
25	25	20	29	16	42	2	1.0	7	190	45	130
30	30	22	34	18	47	2	1.0	8	230	55	170
35	35	25	39	20	55	2	1.0	8	320	75	250
40	40	28	45	22	62	2.5	1.0	8	380	90	320
45	45	32	50	25	68	2.5	1.0	9	500	120	450
50	50	35	55	28	75	2.5	1.0	9	600	145	580
60	60	44	66	36	90	2.5	1.0	9	700	230	1100

Rod End

Spherical Plain Bearings

GE-C Series



Model Number	Main Dimensions (mm)								Static load (kn)		Weight (g)
	B	W	O	H	D	P	R	Permit of Angel α	Radial	Axial	
GE 10C	10	9	12	8	19	-	0.5	8	80	20	13
12	12	10	14	9	22	-	0.5	8	100	25	20
15	15	12	18	10	26	-	0.5	8	120	30	32
17	17	14	20	11	30	-	0.5	8	160	40	45
20	20	16	24	13	35	-	0.5	7	200	50	70
25	25	20	29	16	42	-	1.0	7	380	90	130
30	30	22	34	18	47	-	1.0	8	450	100	170
35	35	25	39	20	55	-	1.0	8	650	150	250
40	40	28	45	22	62	-	1.0	8	850	200	320
45	45	32	50	25	68	-	1.0	9	1000	250	450
50	50	35	55	28	75	-	1.0	9	1200	300	580
60	60	44	66	36	90	-	1.0	9	2000	500	1100

Rod End