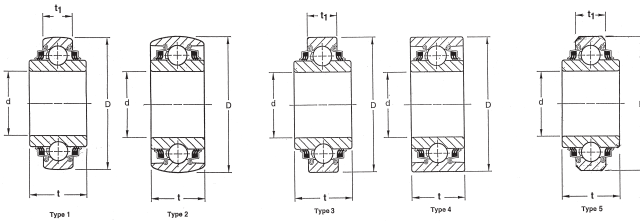


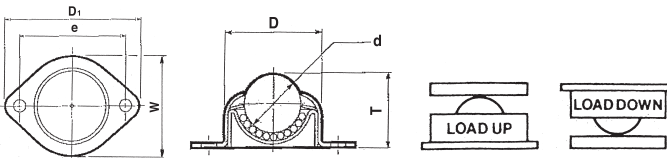
# W200 Tri-Ply\* Series



Bearing Number	Type	Bore Type	O.D Type	Dimensions (mm)								Basic Load Ratings (kN)		Weight (g)
				Bore d		OD D		Width (Inner Ring) t		Width (Outer Ring) t <sub>1</sub>		C <sub>r</sub>	C <sub>0r</sub>	
				inch	mm	inch	mm	inch	mm	inch	mm			
W208PPB12	1	Square	Spherical	1.1811	30.000	3.3760	85.75	1.438	36.53	1.189	87.31	20.2	36.8	0.92
W208PPB2	1	Cylindrical	Spherical	1.5005	38.113	3.1496	80.00	1.688	42.96	0.709	18.00	19.9	36.8	0.72
W208PPB5	1	Square	Spherical	1 <sup>1</sup> / <sub>8</sub>	28.600	3.1496	80.00	1.438	36.53	0.709	18.00	19.9	36.8	0.67
W208PPB6	1	Square	Spherical	1	25.400	3.1496	80.00	1.438	36.53	0.709	18.00	19.9	36.8	0.72
W209PPB2	2	Cylindrical	Spherical	1.7717	45.000	3.3460	85.00	1.188	30.18	1.188	30.18	20.2	36.8	0.65
W210PPB2	2	Cylindrical	Spherical	1 <sup>15</sup> / <sub>16</sub>	49.230	3.5430	90.00	1.188	30.18	1.188	30.18	23.0	39.9	0.71
W211PP2	4	Cylindrical	Cylindrical	2.188	55.580	3.9370	100.00	1.312	33.34	1.312	33.34	29.0	48.8	1.06
W211PP3	4	Square	Cylindrical	1 <sup>1</sup> / <sub>2</sub>	38.100	3.9370	100.00	1.312	33.34	1.312	33.34	29.0	48.8	1.27
W211PP5	3	Square	Cylindrical	1 <sup>1</sup> / <sub>2</sub>	38.100	4.0000	101.60	1.750	44.45	1.438	36.52	29.0	48.8	1.58
W211PPB2	2	Cylindrical	Spherical	2.188	55.580	3.9370	100.00	1.312	33.24	1.312	33.34	29.0	48.8	0.97
W211PPB3	2	Square	Spherical	1 <sup>1</sup> / <sub>2</sub>	38.100	3.9370	100.00	1.312	33.34	1.312	33.34	29.0	48.8	1.21
W211PPB4	5	Cylindrical	Spherical	2 <sup>3</sup> / <sub>16</sub>	55.563	3.9370	100.00	2.1874	55.56	1.312	33.34	29.0	48.8	1.11
W211PPB6	1	Square	Spherical	1 <sup>17</sup> / <sub>32</sub>	38.890	4.0770	103.56	1.752	44.50	1.437	36.50	29.0	48.8	1.35

\* Add Prefix 'G' for re-lubricatable type

## Ball Transfer



Bearing Number	Equivalent Number	Dimensions							Load (N)		Weight (g)
		BALL DIA d		D	D <sub>1</sub>	e	W	T	Load Up	Load Down	
		inch	mm	mm	mm	mm	mm	mm			
C8-Y	BT254-1 or PCP254B	1	25.4	42.0	70.0	56.0	50.8	30.5	540	250	140